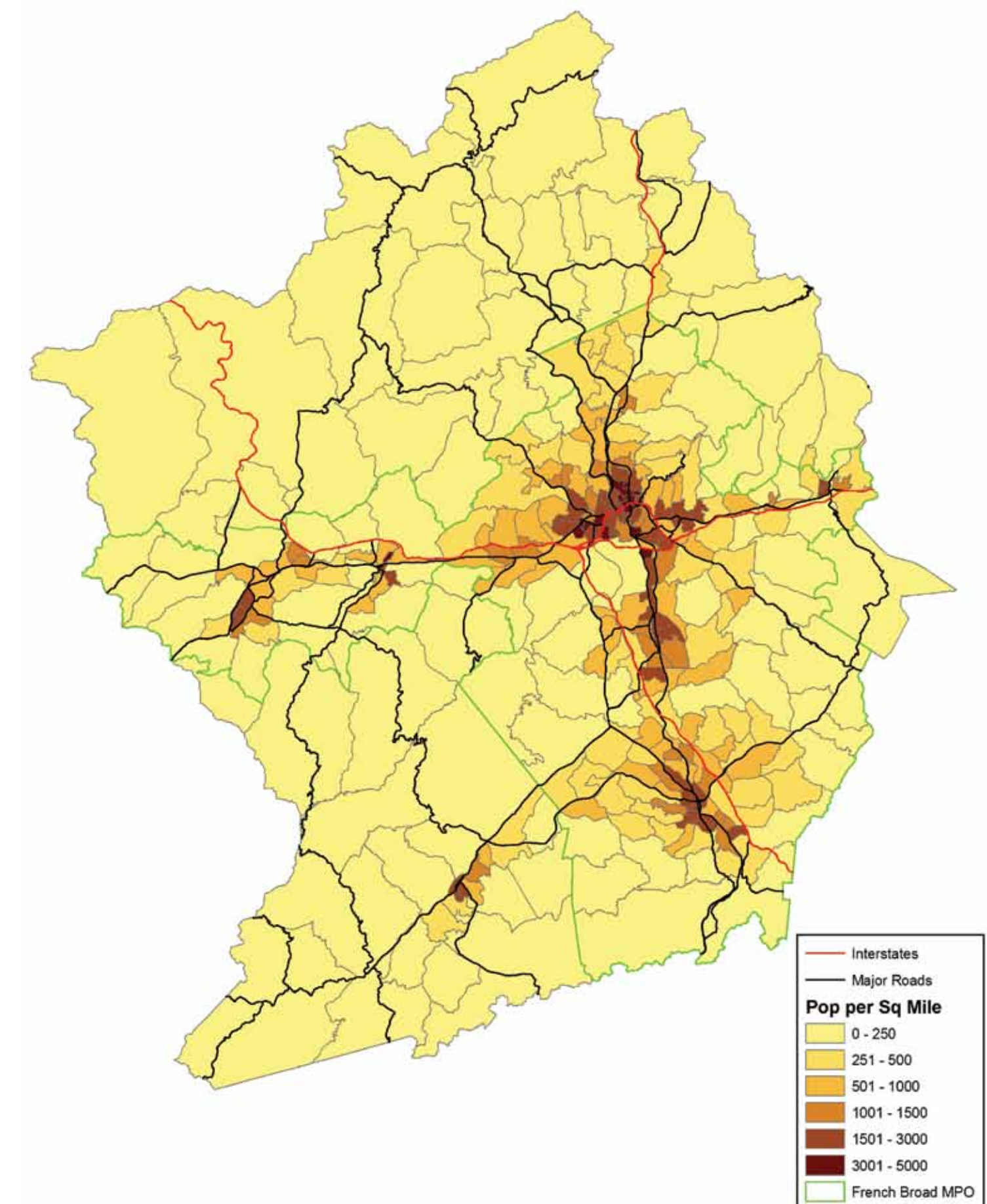


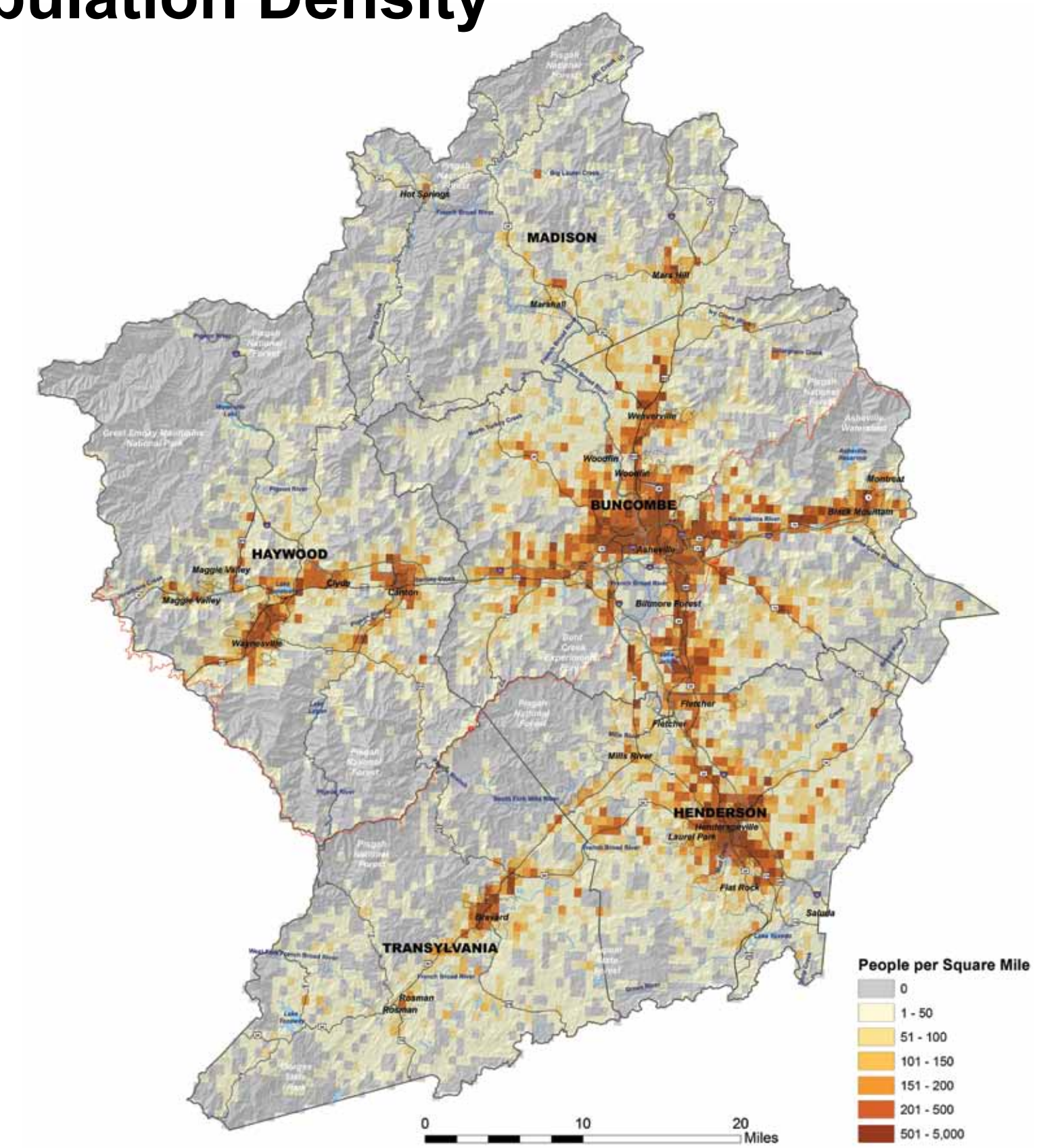
North Carolina has over 9.5 million people. Over 450,000 of those live in our five counties.

The median age in the five-county region ranges from 40.4 in Buncombe County to 47.8 in Transylvania County – higher than the statewide median age of 37 years.

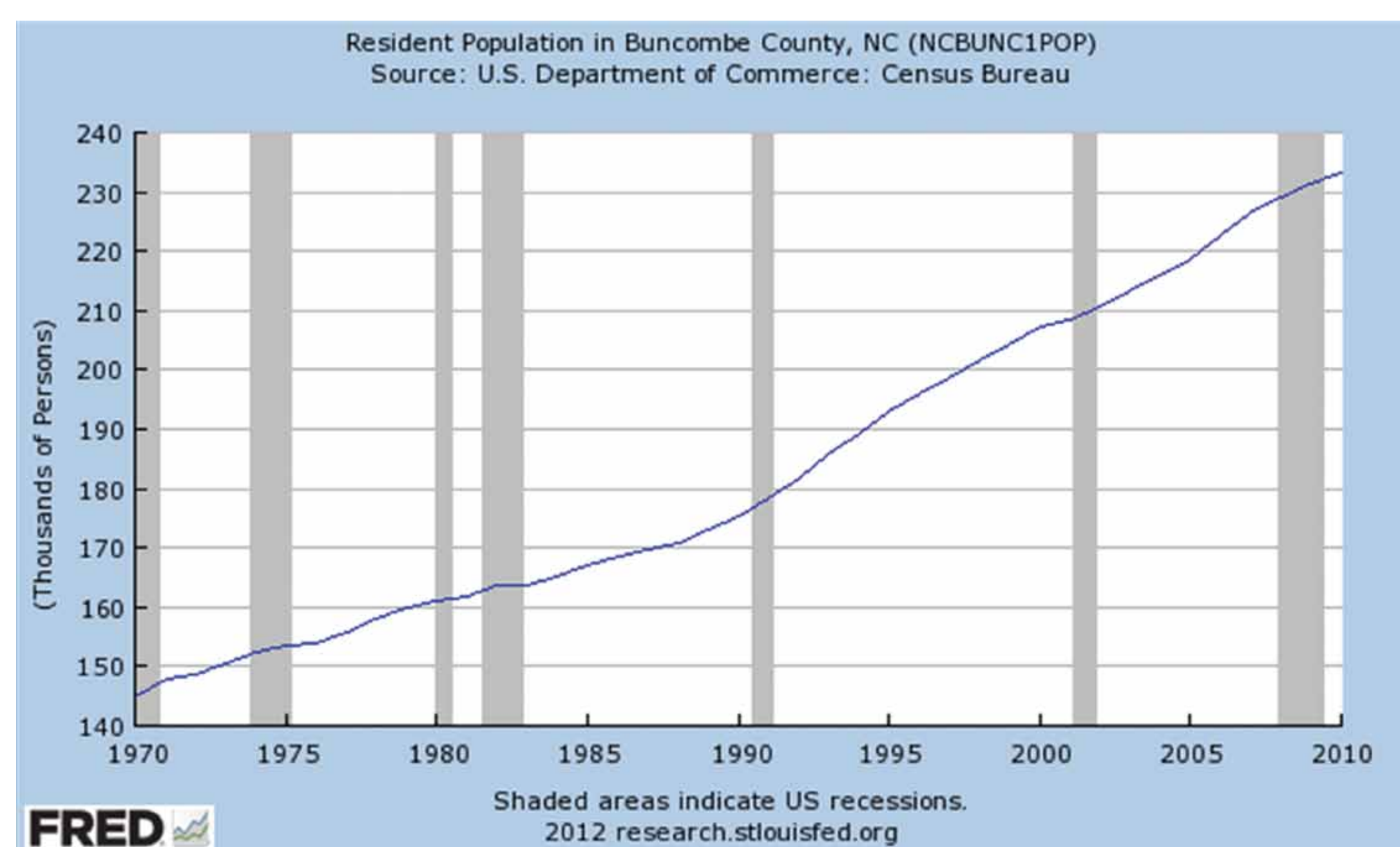
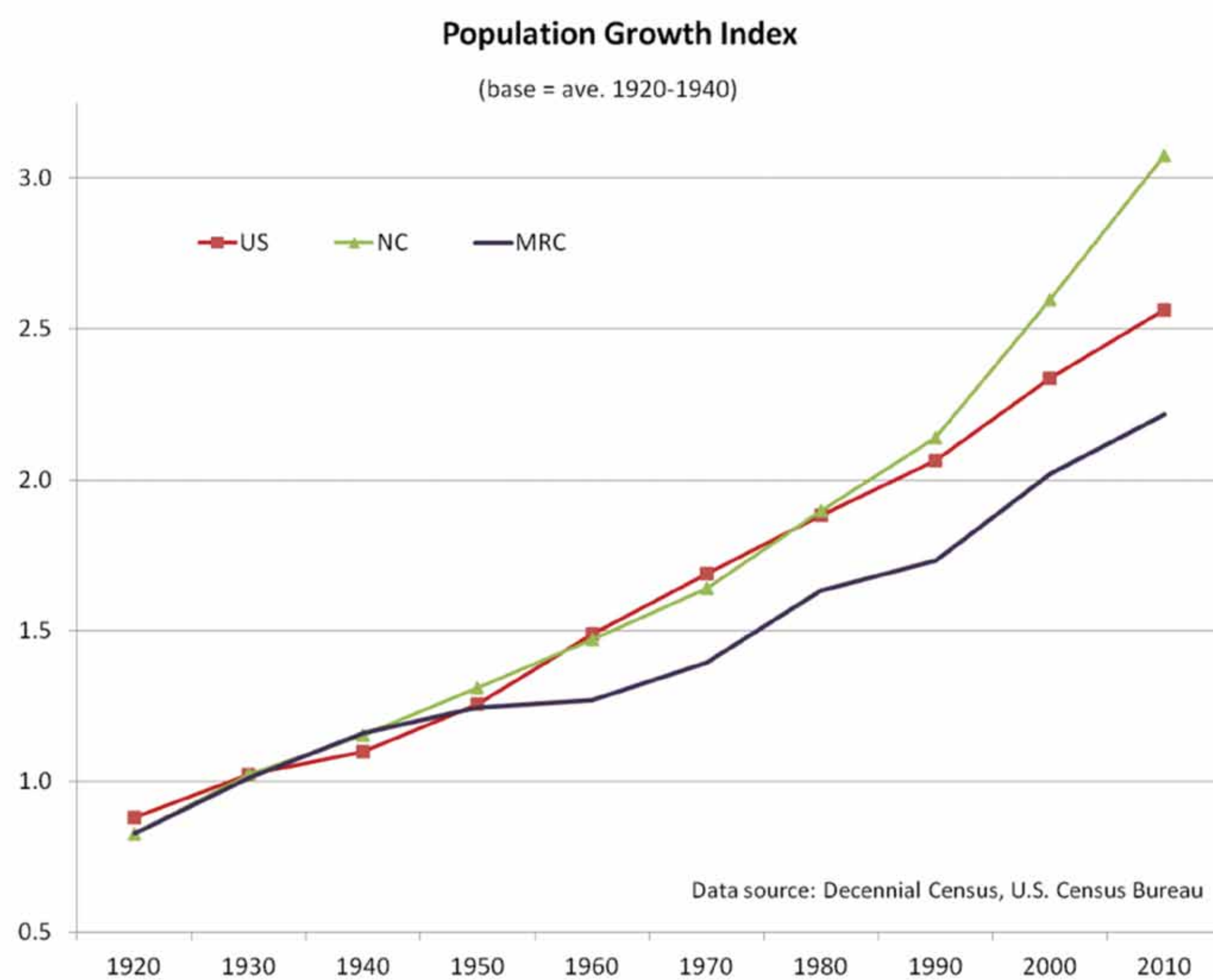
2010 Population by Census Block Group



2006 Population Density

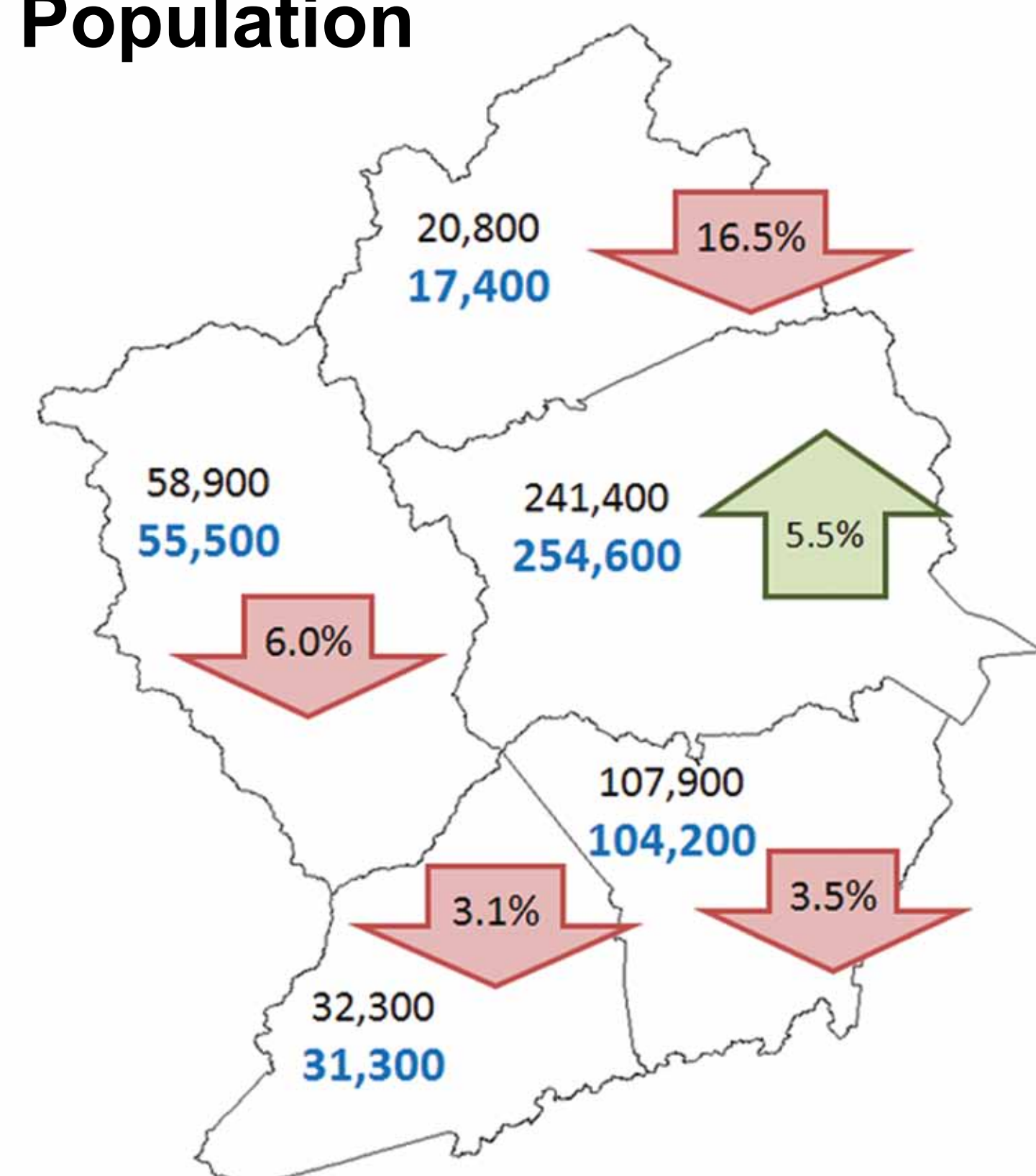


Population Growth Rate



Long-term population trends indicate the vitality of areas within the region. Over time, people migrate to places offering economic opportunity, and the population of places with less-resilient economies tends to stagnate or decline.

Daytime Population



Daytime population is estimated from the number of people who are present in an area during normal business hours, including workers, based on employment data. This is in contrast to the "resident" population present during the evening and nighttime hours, based on data from the US Census Bureau. Information on the expansion or contraction experienced by different communities between nighttime and daytime populations is important for planning purposes, including those dealing with market size, trade/service areas, transportation, and disaster and relief operations.